

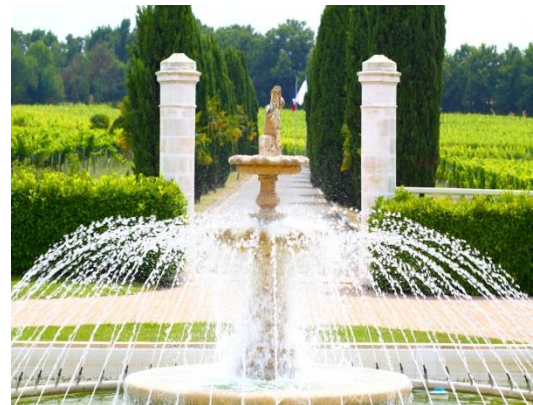
Château LAFITTE
THE WINE TOURISM OASIS



Château LAFITTE

PRESENTATION OF RECEPTION VENUES

YOUR EVENTS IN THE MIDST OF A CHARMING VINEYARD
AT THE GATEWAY TO BORDEAUX, FOR UP TO 1,300 GUESTS



Audrey SALORNE : contact@chateau-lafitte.fr
+33 5 56 06 68 50 - +33 6 28 72 82 09
SCEA Château LAFITTE - Chemin du Loup - 33 370 Yvrac (France)

www.chateau-lafitte.fr





Château LAFITTE

Since 1868

This is a cru steeped in history. Built in the 19th century at the Domaine de Lafitte by the 'Comte Du Val', this prestigious blond-stone building stands on grounds where fruit trees and vines are grown.

In 1973 René Floréal Laguens, a visionary and a forerunner, bought this 37-hectare estate with its 33 hectares of vines and built the largest private function rooms in the region.

Recently acquired by a family of Bordeaux winegrowers who have successfully combined respect for tradition with the introduction of modern facilities, this site has become the biggest events venue on the outskirts of Bordeaux.

PRODUCT LAUNCHES
CONVENTIONS – TRAINING
PRIVATE FUNCTIONS
SEMINARS – SHOWROOM
GALA DINNERS
STUDY DAYS
WINE EVENTS



A Wine Tourism Oasis:

- Located 10 km from Bordeaux centre, close to the ring road.
- Not far from the Pont d'Aquitaine with its hotel district and congress centre.
- Capacity ranging from 10 to 1,300 guests.
- 2 prestige salons in the château, offering 34 m² and 39 m².
- 3 function rooms: 250 m², 750 m² and the 800 m² barrel cellar.
- Château grounds of 1,580 m² with fountain, for cocktails, exhibitions and events.
- 6,000 m² modular reception areas to host all types of events.
- 100% of the site covered by fibre optic-powered very high speed WIFI.
- Car-park with 350 spaces, roadside parking also possible.
- Over 900 palm trees in the site's green spaces.





Château LAFITTE

Salle Fleur du Val

250 m²



Built in the 19th century, the former horse barn was renovated by René Floréal Laguens in 1982 and converted into a function room.

Leading directly to the 1,580 m² park with its fountain, the stone walls of this 250 m² room give it a warm, authentic feel. Unobstructed view over the 375 m² Fleur du Val barrel cellar.



Capacity:

- Cocktails: 325 people
- Seated meals: 200 people
150 p. with dance floor
- Meetings: 130 people



Features:

- Total surface area: 250 m²
- Dim: 10 m (w) x 25 m (l) x 3.9 m (h)
- Commanding view of the barrel cellar
- Direct access to the Salle Floréal Laguens
- Direct access to the Château grounds
- 50 m² catering premises
- Cloakroom with 150 hangers
- Open fire as an option





Château LAFITTE

Salle Floréal Laguens

750 m²

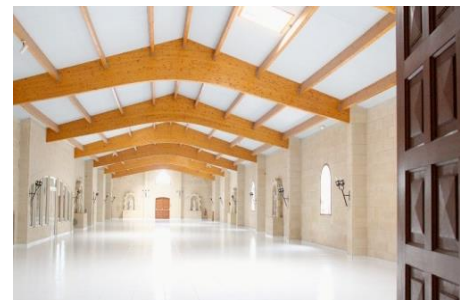


In 1993, René Floréal Laguens built this 750 m² room with a panoramic view over its 800 m² barrel cellar.

This modular space comprising 1,550 m² is the largest private function room in the outskirts of Bordeaux. Its ground-floor access and various appointments are greatly appreciated among organisers and technical service providers.

Capacity:

- Cocktails: 1 000 people
- Seated meals: 650 people
550 p. with dance floor
- Meetings: 500 people



Features:

- Total surface area: 750 m²
- Dim: 12.5 m (w) x 60 m (l) x 4 à 6 m (h)
- 80 m² catering premises
- 2 cloakrooms with 700 hangers
- Partitioning possible with stretched fabric

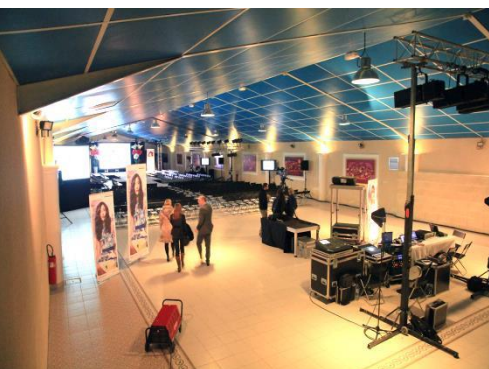




Château LAFITTE

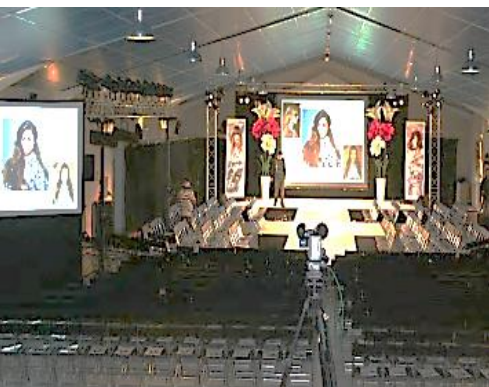
Floréal Laguens Barrel cellar

800 m²



René Floréal Laguens built this second 800 m² barrel cellar in 1993. Adjoining the 750 m² Salle Floréal Laguens and with direct access to it, it offers an amazing panoramic view of the estate's oak casks.

This adjoining cellar now contains decorative barrels only in order to host stage sets at future events. The extension to the Salle Floréal Laguens can be partially or fully emptied for your functions: **showroom, vehicle launches, fashion parades, etc.**



Capacity:

- Cocktails: 750 people
- Seated meals: 550 people
- Meetings: 450 people



Features:

- Total surface area: 800 m²
- Dim: 14.8 m (w) x 54 m (l) x 3.5 à 5.4 m (h)
- Dressing room and audio room





Château LAFITTE

Château Salons

39 m² and 34 m²



Facing the 1,580 m² grounds and the fountain, on the ground floor of the château with direct access, this space is ideal for **meetings, management committees, training sessions, cocktails and dinners.**

Château LAFITTE Salon d'Honneur

Capacity:

- Cocktails: 35 people
- Seated meals: 30 people
- Meetings: 25 people

Features:

- Total surface area: 39 m²
- Dim: 6.1 m (w) x 6.4 m (l)
- Working fireplace
- VIP car-park with 25 spaces



Château LAFITTE Dining Room

Capacity:

- Cocktails: 25 people
- Seated meals: 20 people
- Meetings: 20 people

Features:

- Total surface area: 34 m²
- Dim: 4.25 m (l) x 8 m (L)
- 20 m² catering premises
- Fitted with a video-projector



Château LAFITTE

Events & Access Plan



Wine Themed

Visit to the cellars and initiation into tasting coordinated by Pierre Laroche, the Château's bilingual oenologist: Discover the art of blending grape varieties and the stages in tasting. Express what your taste buds are experiencing using the right vocabulary.



'Trip Tasting' supervised by sommeliers:

A dozen Bordeaux AOC wines (Saint-Emilion, Pauillac, Pessac-Léognan, Médoc, Graves, Sauternes...) with commentaries, chosen by the guests with the aim of discovering the various appellations in the wine region and all the riches of its terroirs.

'Wine blender':

During an aperitif or a meal, we offer an interactive wine event for guests to see wine 'differently'. It involves the discovery of the Bordeaux grape varieties and the way they are blended. Guests can 'create' their own wine during the evening!



Wine quiz with a tasting of a mystery wine:

Armed with a questionnaire, clues (aromas, vine leaves...) and a good team spirit, discover the secrets of the Bordeaux wine region, tasting and grape varieties.

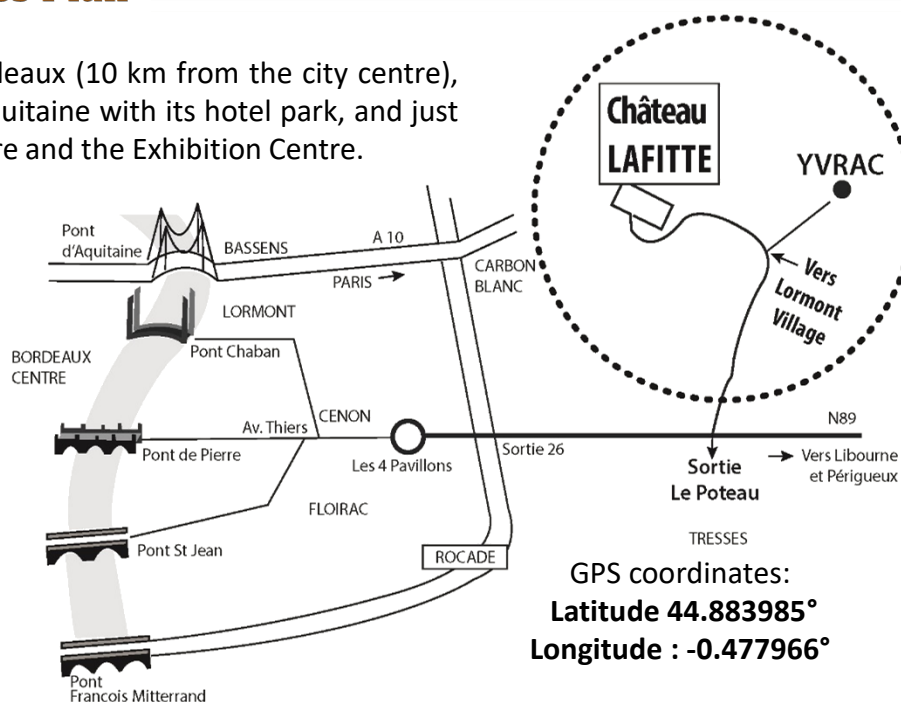
Our business is to build customized events
To make your day a success!

Access Plan

Château LAFITTE is located east of Bordeaux (10 km from the city centre), close to the ring road and the Pont d'Aquitaine with its hotel park, and just a stone's throw from the Congress Centre and the Exhibition Centre.

From the ring road: take exit 26 signposted to Libourne. On the RN 89 road, take exit 2 signposted Yvrac Le Poteau. Follow directions to Yvrac centre.

After the supermarket, go straight on at the roundabout and 300 metres further on take the first left before the hairdresser's. You are 500 metres away.



GPS coordinates:
Latitude 44.883985°
Longitude : -0.477966°



www.chateau-lafitte.fr

